



Generation and Transmission Maximization (GTMax) Software

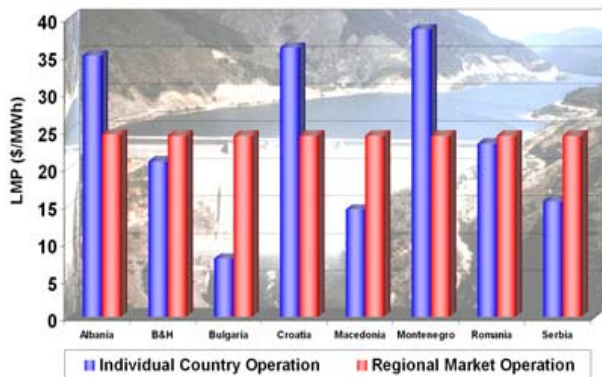
Introduction

ADICA provides strategic analysis software, consulting services and training to help our clients succeed in evolving energy markets. We are a worldwide distributor of cutting-edge energy market analysis software developed by Argonne National Laboratory (ANL), including GTMax.

ADICA's approach to implementing national and regional projects is unique in that we both: 1.) Conduct insightful analyses, and 2.) Transfer the software utilized in conducting the analyses to companies that participate in the project.

Regional Power Trade

Our work is at the forefront of assistance being provided to countries in evaluating potential benefits of regional power trade. The GTMax software was utilized for a project funded by **USAID** and organized under the Southeast European Cooperative Initiative (**SECI**) to analyze an envisioned Regional Electricity Market for South East Europe.

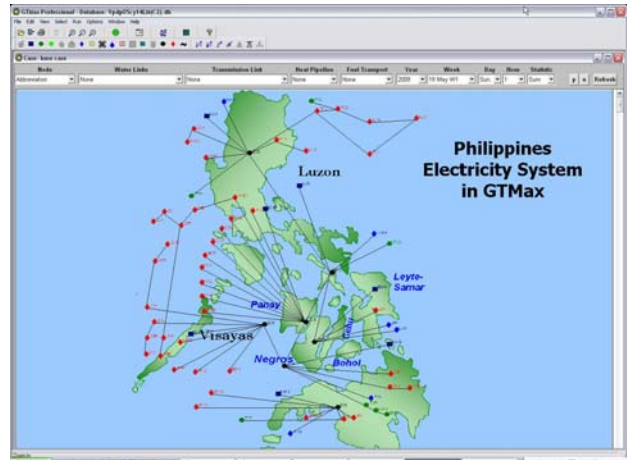


This analysis provided valuable insights in identifying projected trades between regional market hubs, locational marginal prices (LMPs) across the regional network, economic benefits of regional trading, economic impacts on individual countries, companies, and consumers, and the role of hydropower in the future regional electricity market.

As part of this project, ADICA and ANL transferred the GTMax software to 16 companies from 8 countries and provided training in the use of the methodology and model. Follow-up analyses with GTMax are being carried out for the **European Community** and **World Bank** to conduct a Generation Investment Study for South East Europe.

National Power Development

GTMax is being used around the world. Chubu Electric Power Company used GTMax together with the WASP-IV model for a Japan International Cooperation Agency (**JICA**) funded study to develop a Power Development Program for the Philippines. In the study, GTMax was used to evaluate system operation, determine optimal location of power sources, and assess the benefits of new transmission lines.



In the United States, GTMax is connected to real-time data systems at the Western Power Administration where the software is used to optimize the value of company resources in terms of thermal and hydro power plant operations, firm purchases and sales, interchanges and exchanges, and spot market activity.

GTMax Software

As the above reference projects illustrate, GTMax is a powerful, adaptable, and affordable tool for simulating complex electricity market and operational issues.